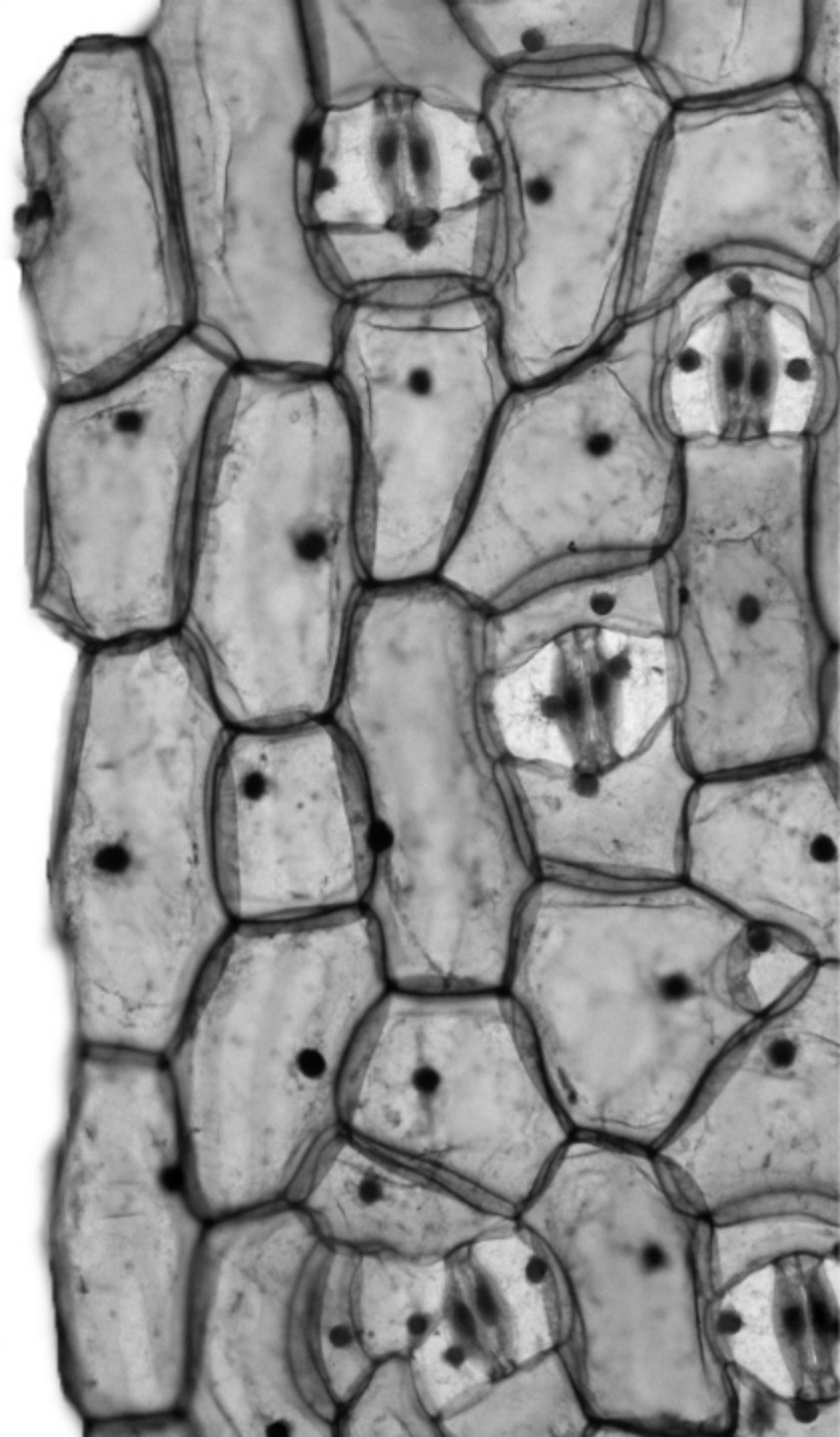


ZIYAN WANG

**MY WAY
PROJET1 & FIRST WEEK**



How to express my journey to communication design?

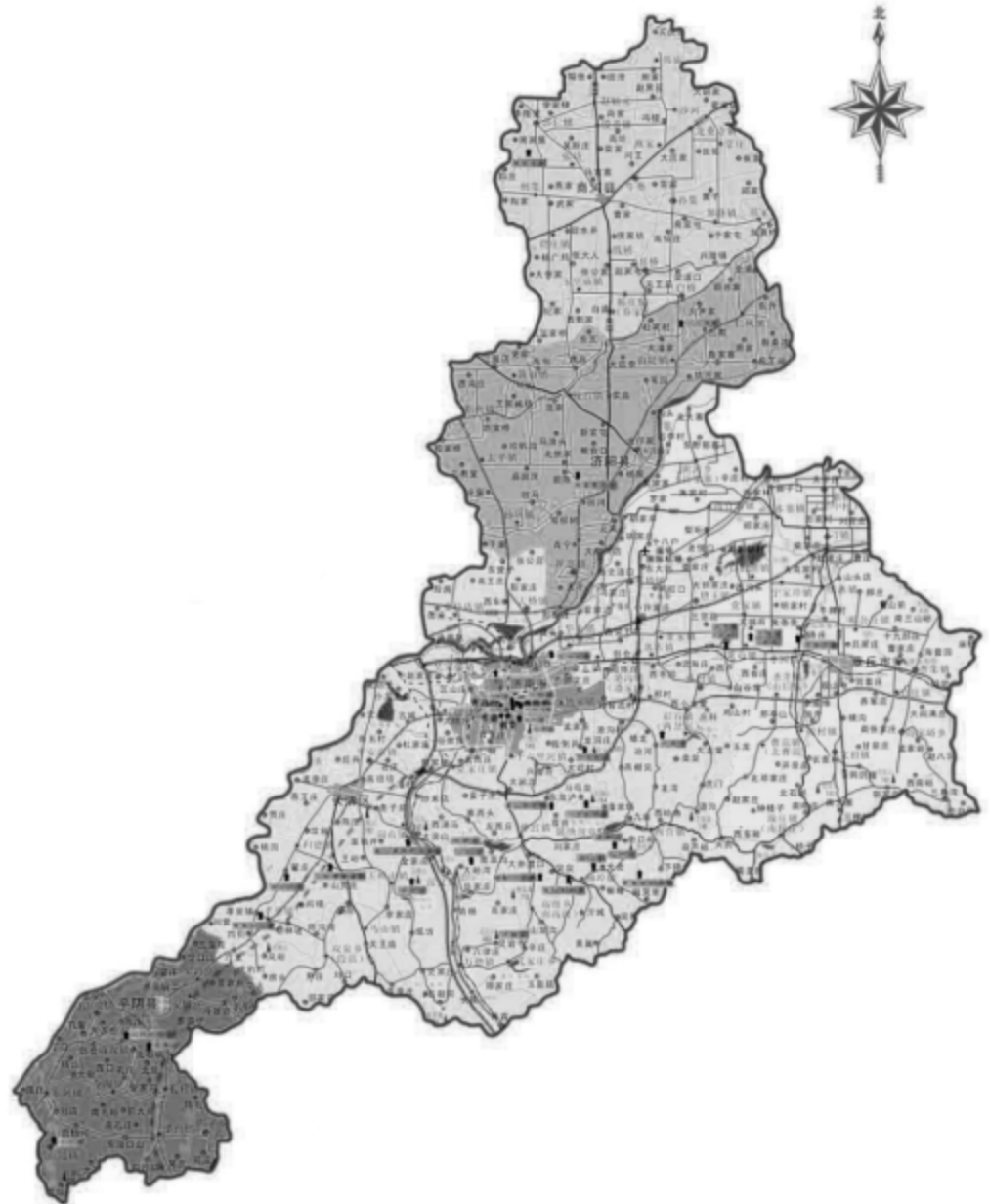
It includes a brief introduction of my current interest, skills and advantages. Based on the features and characteristics of a map.

Map: A map is a symbolic depiction emphasizing relationships between elements of some space, such as objects, regions, or themes. Although most commonly used to depict geography, maps may represent any space, real or imagined, without regard to context or scale.

Journey: journey is also used as a metaphor in language to help describe and understand other concepts that are sequentially linked. For example, journey of life, journey to happiness, journey to Olympic gold, journey of discovery, the road to freedom.

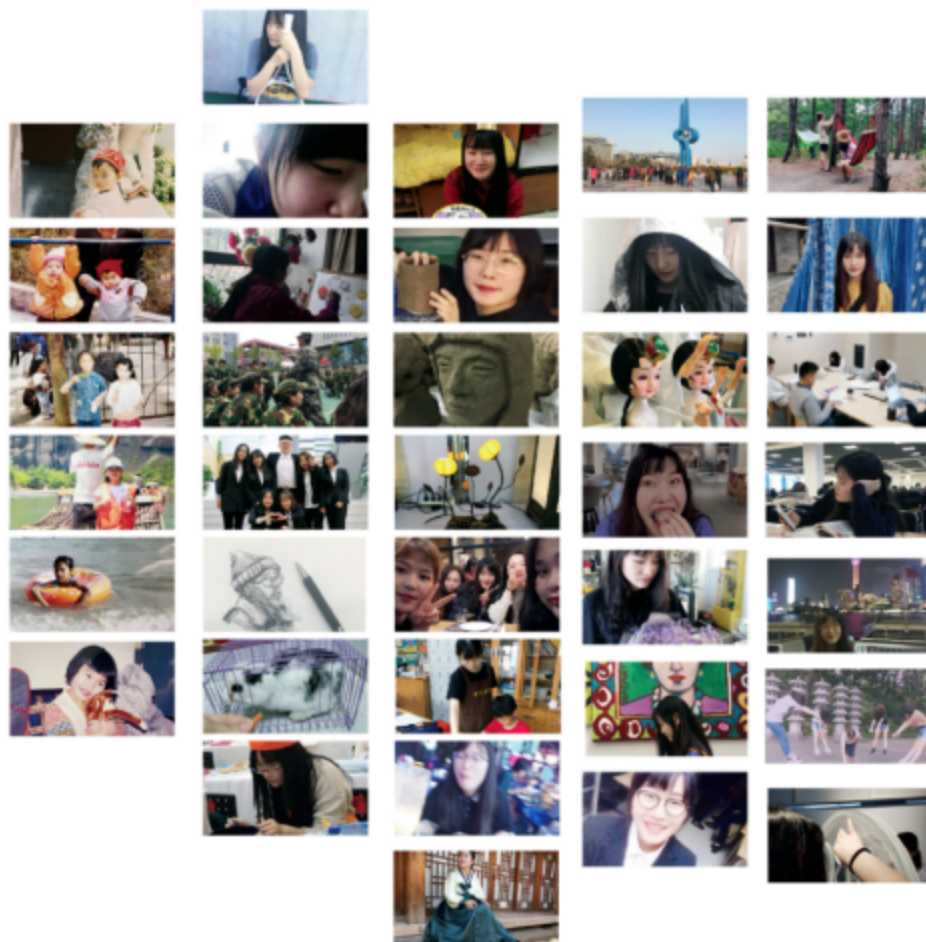
STATEMENT OF INTENT

In this project, I plan to combine the two elements of cell and my hometown to tell my education experience and life track. Through data visualization, living in Jinan is like a cell working in an organ. Although it is a small part, it is also an irreplaceable part. It plays its own function and role and constantly enriches myself in the journey of life. It is precisely because of the accumulation of education that my journey of communication design is formed.



PRIMARY RESEARCH

Because the theme is my way, I first conducted a research on myself, because the long time may lead to the loss of memory, I collected some photos of me at different stages to help me analyze myself. I find that in my life, family and education accounts for a large proportion in my life, even affects my interests, hobbies, and affected the trend of my whole life.



PRIMARY RESEARCH

After that, I listed my educational experience from childhood to adulthood, and invited several closest friends to comment on me. I found that almost all my experiences were closely related to my hometown, so I thought of recording my track through the map of my hometown.



SECONDARY RESEARCH

Cells is an individual unit with common characteristics



细胞是生命的基本单位。细胞的特殊性决定了个体的特殊性。但是同时，细胞又是一群具有共性的个体。其内在的和谱与统一在我们看来，有许多与人类社会相似和值得借鉴的地方。对细胞的深入研究能够揭示生命的奥秘，改造生命，征服疾病。这是从生物学上去研究。如果从社会学上研究，细胞就是我们改造社会，消灭不良现象的导师。因为细胞是和谐的个体，细胞社会是和谐有序高效的社会。

细胞首先是细胞社会中的个体，然后才是细胞内细胞器的群体。这统一的结构使得整个细胞社会能够顺利地运作，使生命的功能得以表现。

首先观察单个细胞，每一类型的细胞都有着自己的功能，因而它们内部细胞器细胞基质的组成都有所不同。它们各自根据自身功能而建立的机制。例如在叶肉细胞中，叶绿体的数量就远大于其他细胞。因为叶肉细胞是光能的受体，提供能量的作用，而靠近细胞核主要起控制作用。它的细胞壁较厚而且形态规则。

而人类社会也是一样，在各个不同的部门中，总是需要不同的人才能运作，才能使得这个部门运转最大功效。而如果一个不懂长函数的人去当记者，无疑是一种浪费的行为。但是由于人类社会的弹性比较好，宽容性还比细胞竞争的自残性。因此浪费人才的现象才会存在。而如果是细胞社会中，一个奢侈的，功能不符合或者竞争的细胞会被迅速淘汰，这样使得在细胞演化过程中，保留下来的都是合适的细胞。因而细胞社会才显得比人类社会更和谐。

the particularity of cells determines the particular of individuals.

Each cells has its own function

The same as human society

human society and cells are very similar.

harmonious and unified organic whole

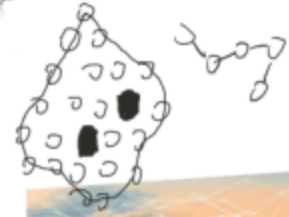
Cell { globular
Polyhedron
spindle
columnar body



basic structure of animal cells



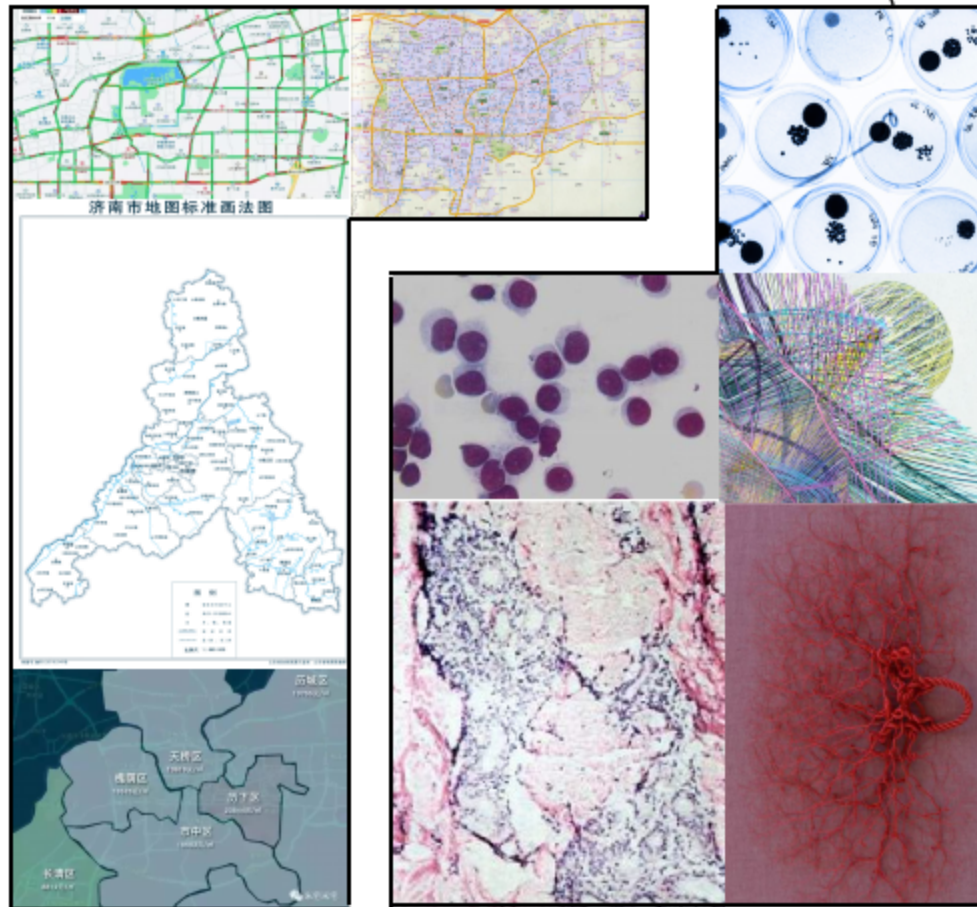
Commonness and individuality



Then I saw an article discusses the relationship among individual cells, cell society and human beings society, It inspired me, Human society and cellular society are so similar.

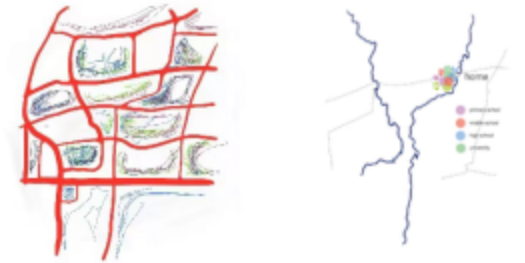
FIRST VERSION

select elements



select drawing

draft



first version



I use round cells to represent myself, and express my life track through specific geographical location and different periods of myself

FINAL VERSION



